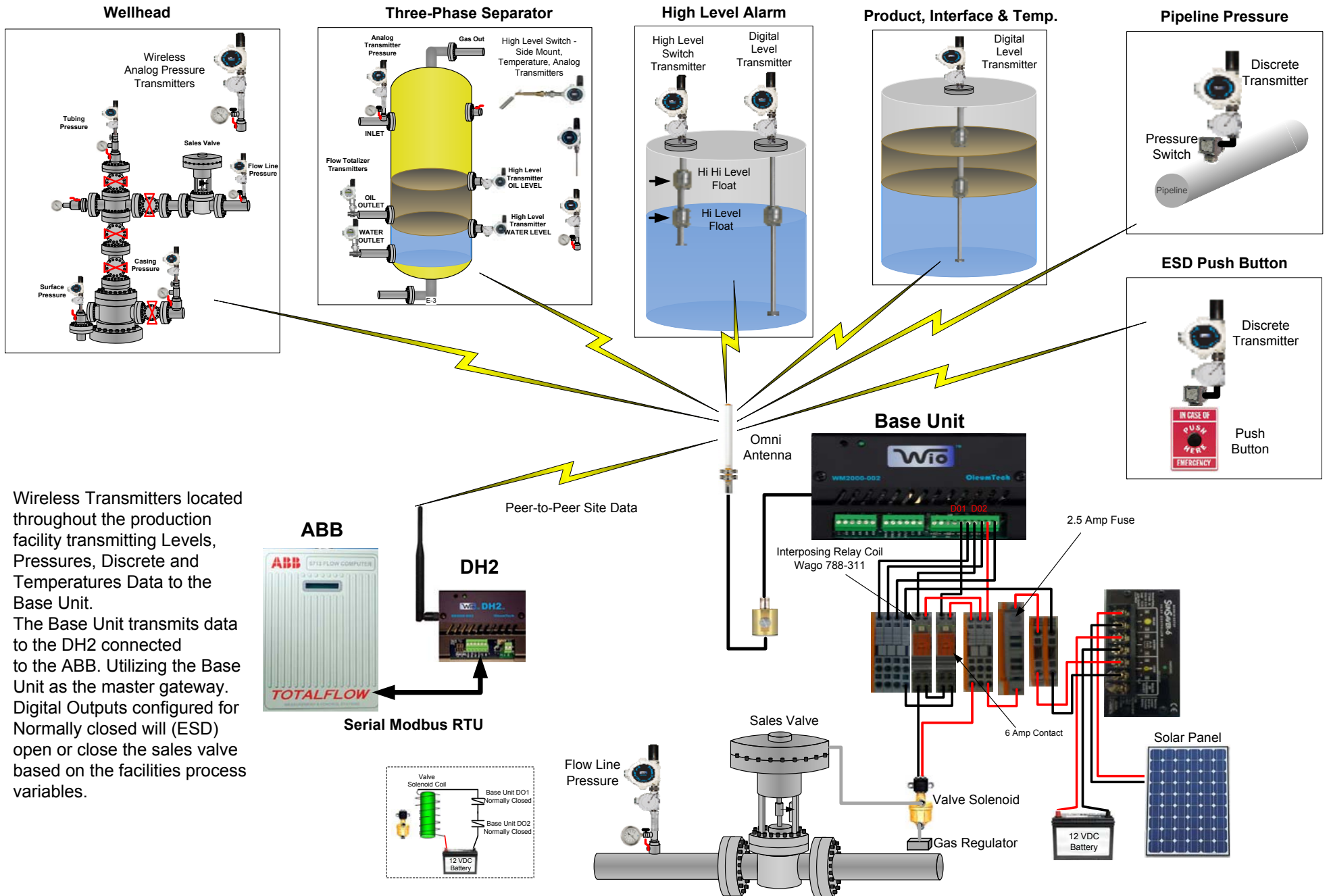


APPLICATION DRAWING

WIRELESS UPSTREAM APPLICATIONS FROM PRODUCTION SITE



Wireless Transmitters located throughout the production facility transmitting Levels, Pressures, Discrete and Temperatures Data to the Base Unit.

The Base Unit transmits data to the DH2 connected to the ABB. Utilizing the Base Unit as the master gateway. Digital Outputs configured for Normally closed will (ESD) open or close the sales valve based on the facilities process variables.